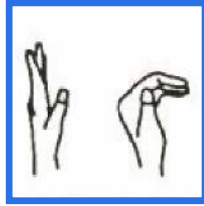


Chapter 2 - Aircraft Systems

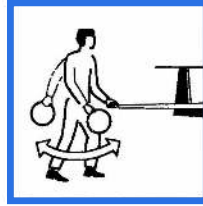
Aerotow Launch Signals (on the ground)



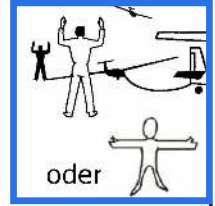
Check controls



Open/close
Towhook



Take up slack*



Hold position*

same time



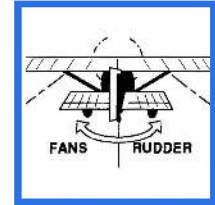
Pilot ready
level wings



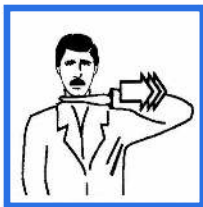
Wing runner
Beginn Take off



Pilot
Beginn Take off



Towplane ready*



Release towline*
or Stop engine



Stop operation*
Emergency

! * Part of the Test

Take-off Procedure

- The hook-up should be checked for proper operation.
- The WR applies tension to the rope and signals the pilot to activate the release.
- The WR should verify that the release works properly and signals the pilot
- When the towline is hooked-up the WR repositions to the wing that is down
- When the Pilot signals "ready for Take-off" the WR clears TO and Landing area and signals "Take off slack" to the towpilot. Once the slack is out of the rope
- The WR verifies the the Pilot is ready for TO and raises the wings to a level pos.
- The WR signals "Beginn TO" and the Pilot "Beginn TO" (waggling rudder)